

Practical of Rhizosphere Fauna (selective course)

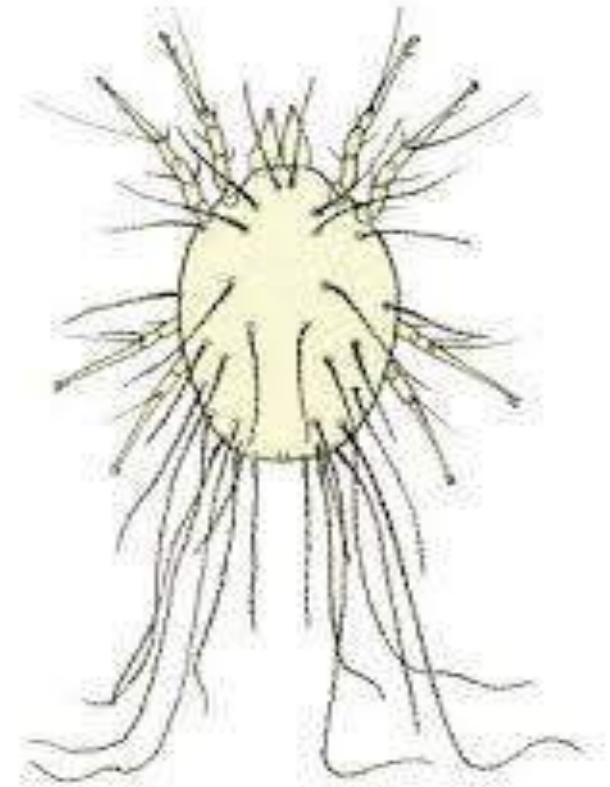
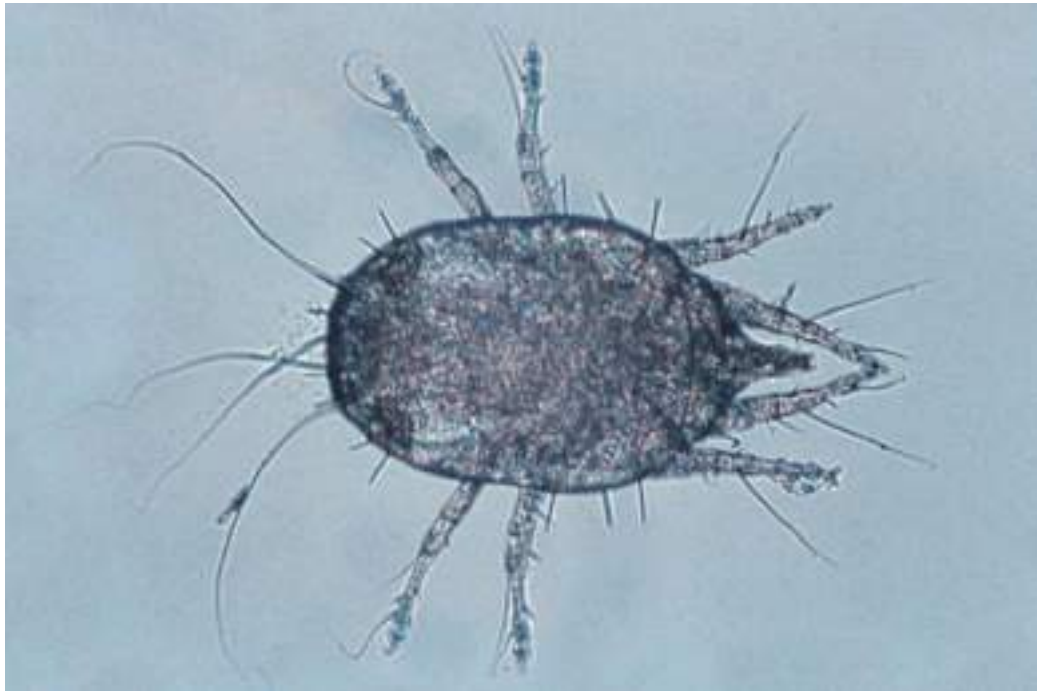
Level one – Program Biotechnology

Section number six 25/3/2020

classification of Mites

Phylum : Arthropoda

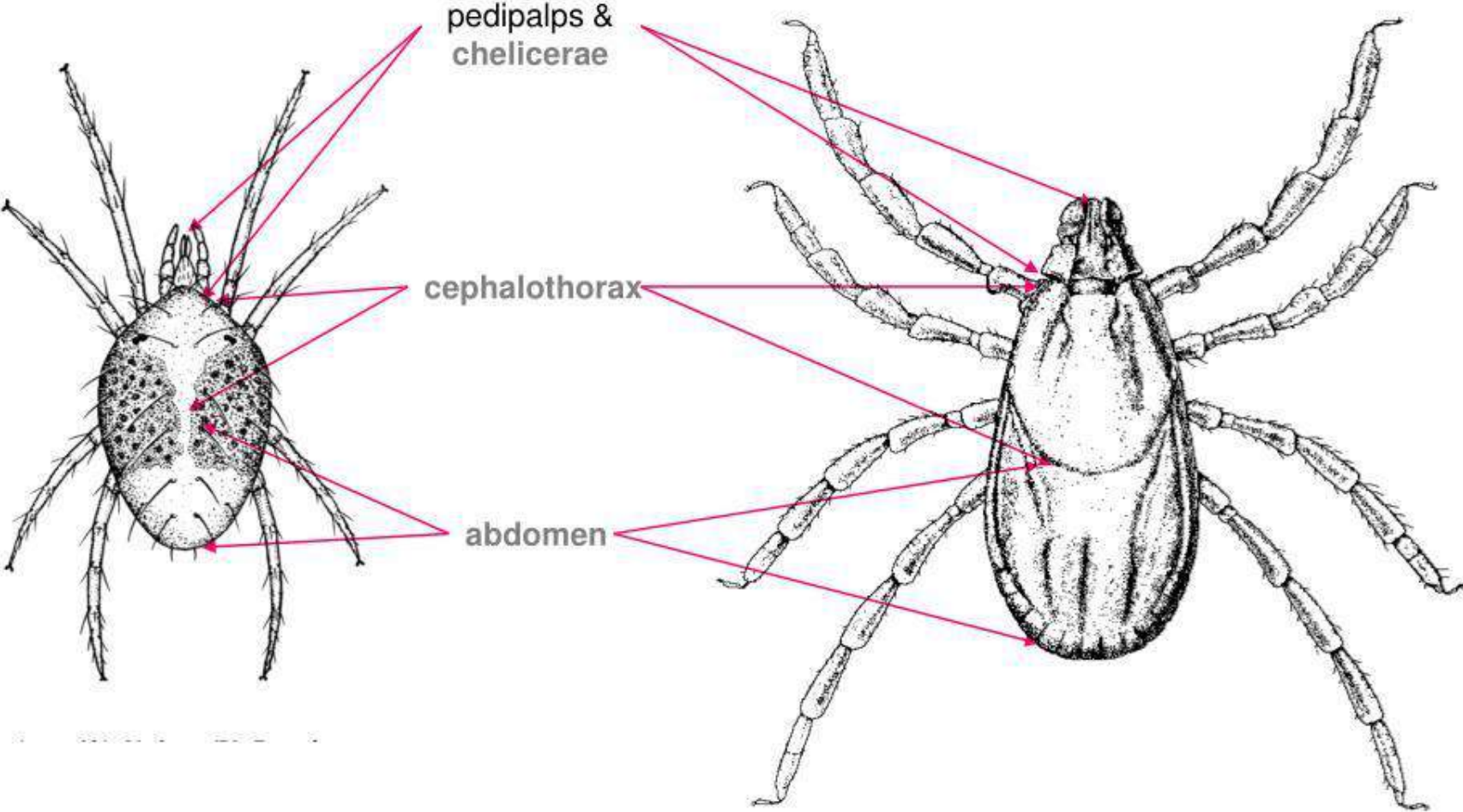
Class : Arachnida

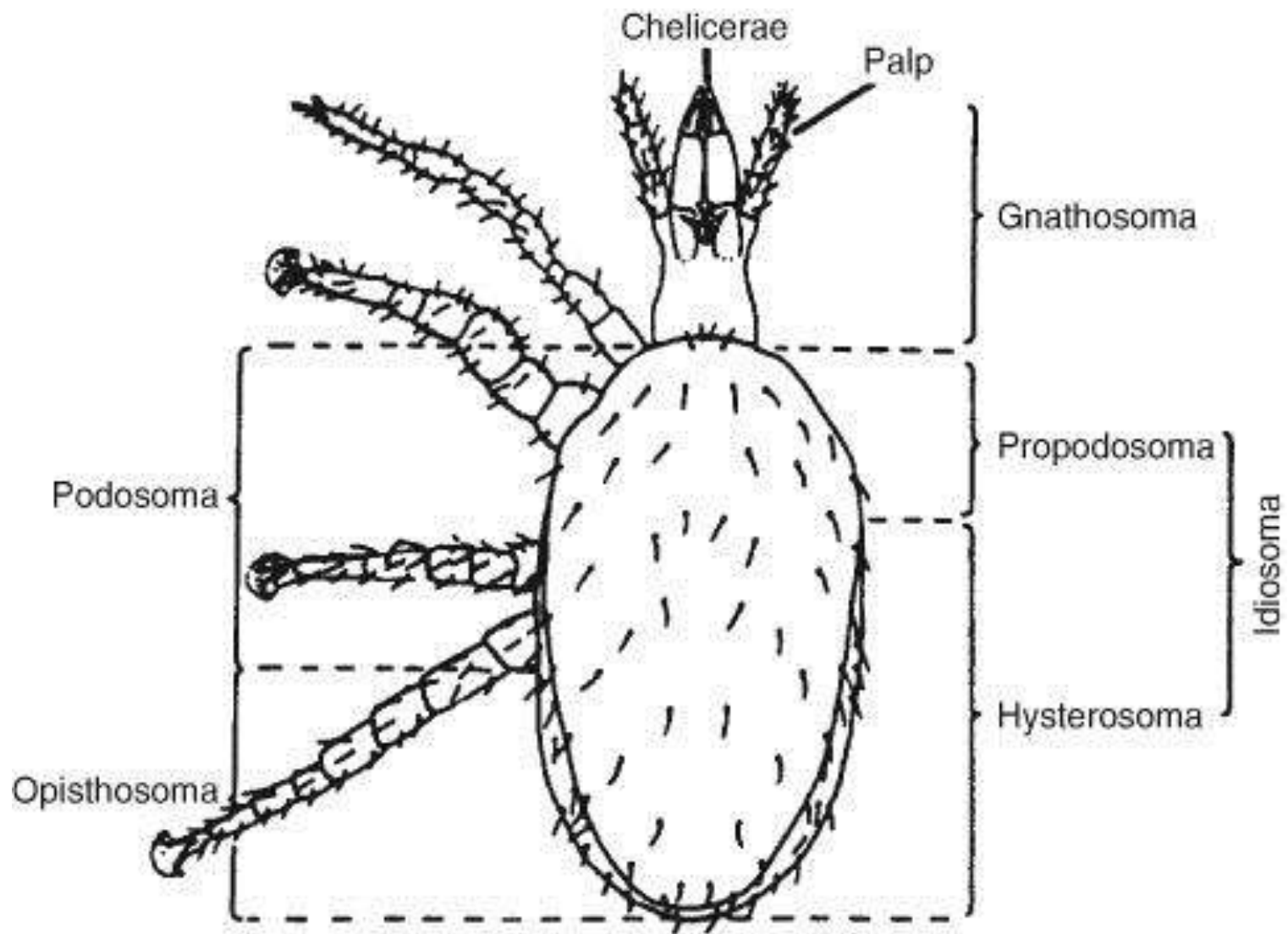


The most distinctive Characters of mites

- 1. Mites are microfauna (Microarthropods)**
- 2. They are Multicellular animals**
- 3. The body is segmented**
- 4. There are 4 pairs of legs on the body**
- 5. The body is covered with hairs or scales.**

Mite and Tick Body Regions





classification of Spider

Phylum : Arthropoda

Class : Arachnida



The most distinctive Characters of Spider

- 1. Spiders are macrofauna (Macroarthropods)**
- 2. They are Multicellular animals**
- 3. The body is segmented**
- 4. There are 4 pairs of legs on the body**
- 5. The body is covered with hairs or scales.**

